

State and Beech Road Active Transportation and Infrastructure Improvements Project



June 26, 2023

Preliminary Public Meeting



Introductions

- Jeff Brubaker, AICP – Eliot Town Planner
- Travis Wolfel, PE – Stantec Project Manager and Lead Engineer
- Kyle Jacques, EI – Stantec Project Engineer

Meeting Goals

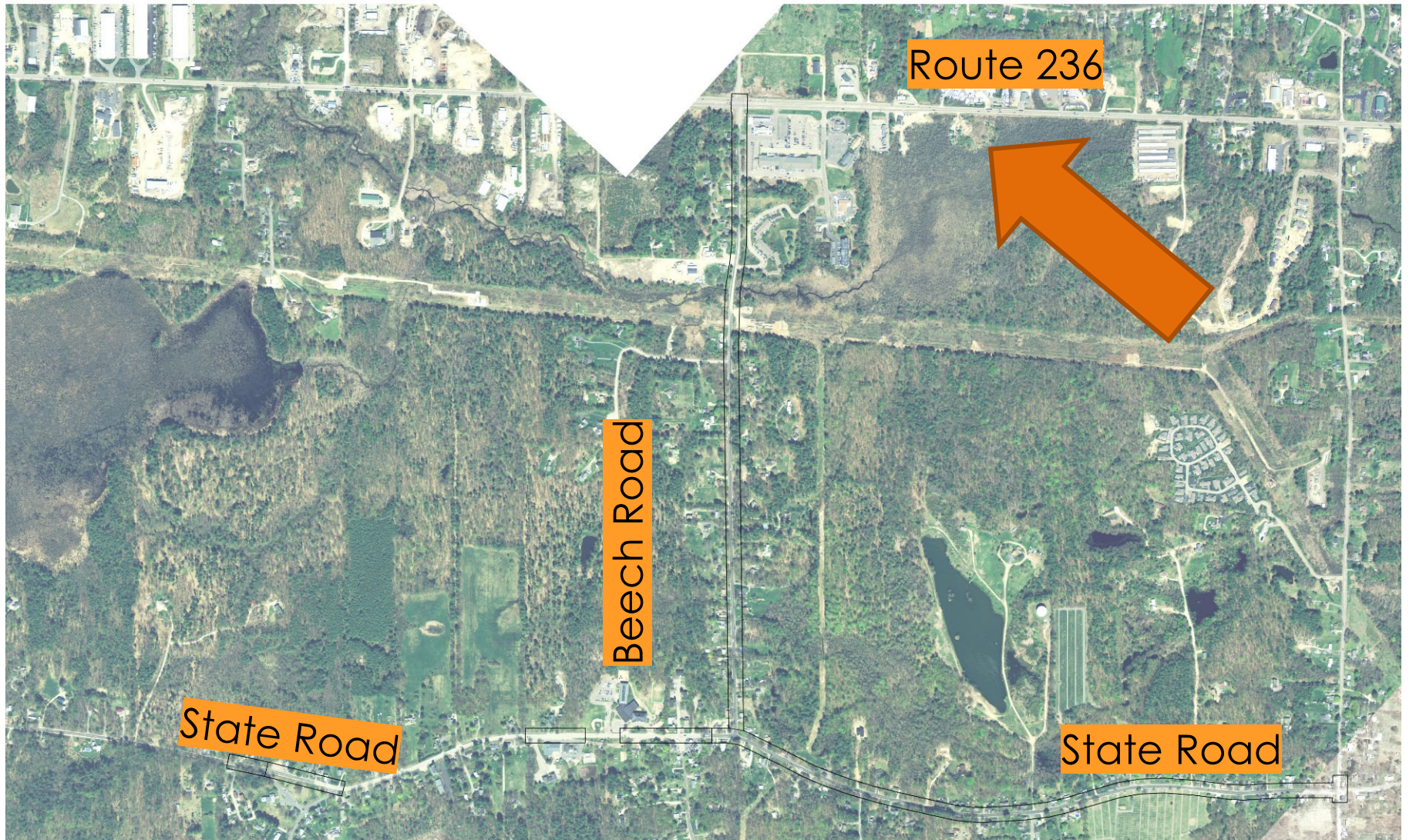
- **Make public aware of the project**
- **Share project information, development process, and schedule**
- **Collect public input and concerns early in the design**

Agenda

- 1 Existing Site & Conditions**
- 2 Project Purpose & Need**
- 3 Design Alternatives**
- 4 Review of Preliminary Design**
- 5 Project Schedule**
- 6 Public Input & Q/A**

1 Existing Site & Conditions

- Aerial Map
- Existing Roadway Conditions



Existing Roadway Conditions

- State Road
 - 1 lane in each direction
 - 22'-24' paved width with no shoulders
 - between Fire Station and Moses Gerrish Farmer Road has 11' travelways and 4' shoulders
 - Only sidewalk in project area, and Eliot, is from Old Road to Moses Gerrish Farmer Road
 - Substandard cross slopes
 - Eastern Trail on road route
- Beech Road
 - 1 lane in each direction
 - 22'-24' paved width with no shoulders or sidewalks
 - Substandard cross slopes



Typical State Road Section



Elementary School
Crosswalk on State Road



Old Road Crosswalk on
State Road



Typical Beech Road Section



State Road near Moses
Gerrish Farmer Road



State Road and Beech
Road Intersection

2 Project Purpose & Need

- To improve the safety and accessibility for people to walk and bike by addressing the current roadway conditions:
 - Lack of Sidewalks
 - Inadequate shoulder width
 - Accessibility barriers
 - Substandard crosswalks

3 Design Alternatives

- Sidewalk location
- Sidewalk with Esplanade
- Multi-use Path
- Bicycle Lanes
- Sidepath

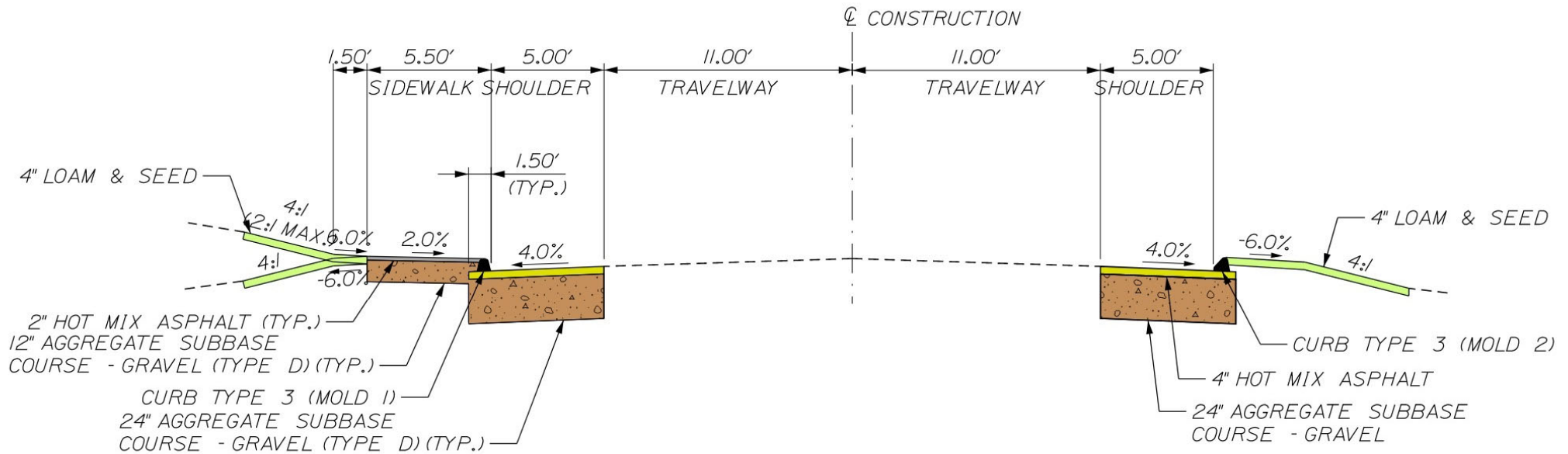
Factors Influencing Design

- Pedestrian and bicycle accommodations
- Shoulder & sidewalk widths
- Existing Roadway Geometry
- Existing Right-of-Way
- Existing Utilities
- Roadway Drainage
- State and Federal design standards, Americans with Disabilities Act

4 Review of Preliminary Design

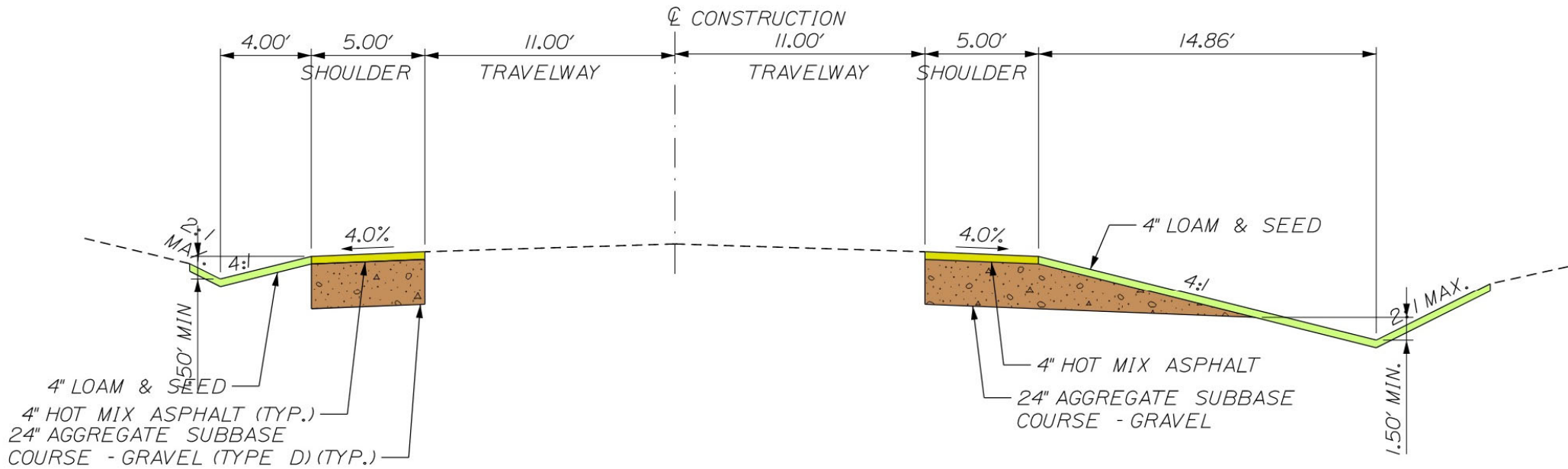
- Five project Segments
- Horizontal and vertical alignment to remain the same
- Travelway improvements to be determined in final design
- Shoulder reconstruction and widened to 5'
- 5.5' sidewalk with curb on one side of roadway
- Open and closed drainage improvements

Typical Sections



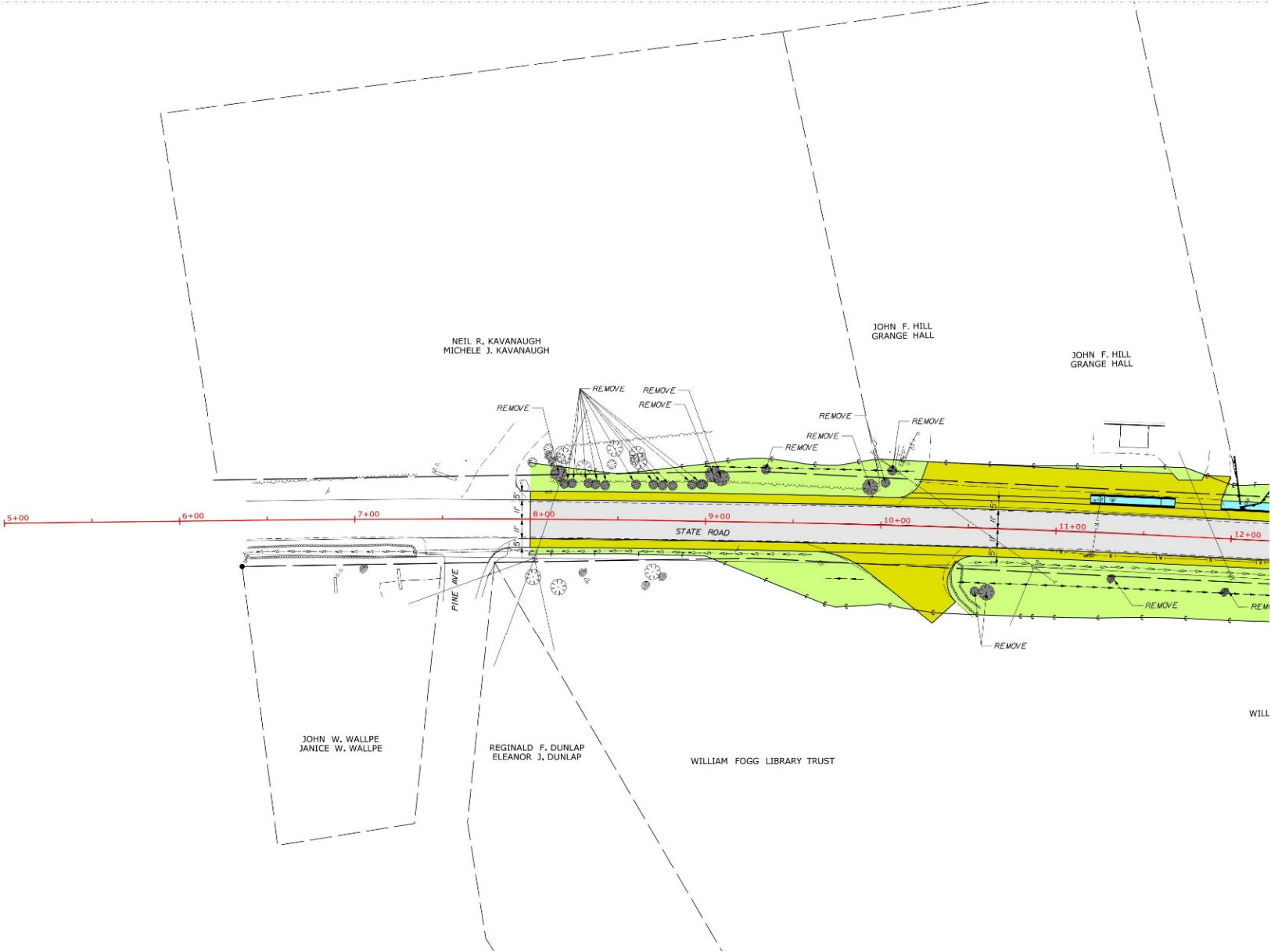
TYPICAL SHOULDER CONSTRUCTION
WITH TYPE 3 CURB AND BITUMINOUS SIDEWALK

Typical Sections



TYPICAL SHOULDER CONSTRUCTION
WITH OPEN DRAINAGE

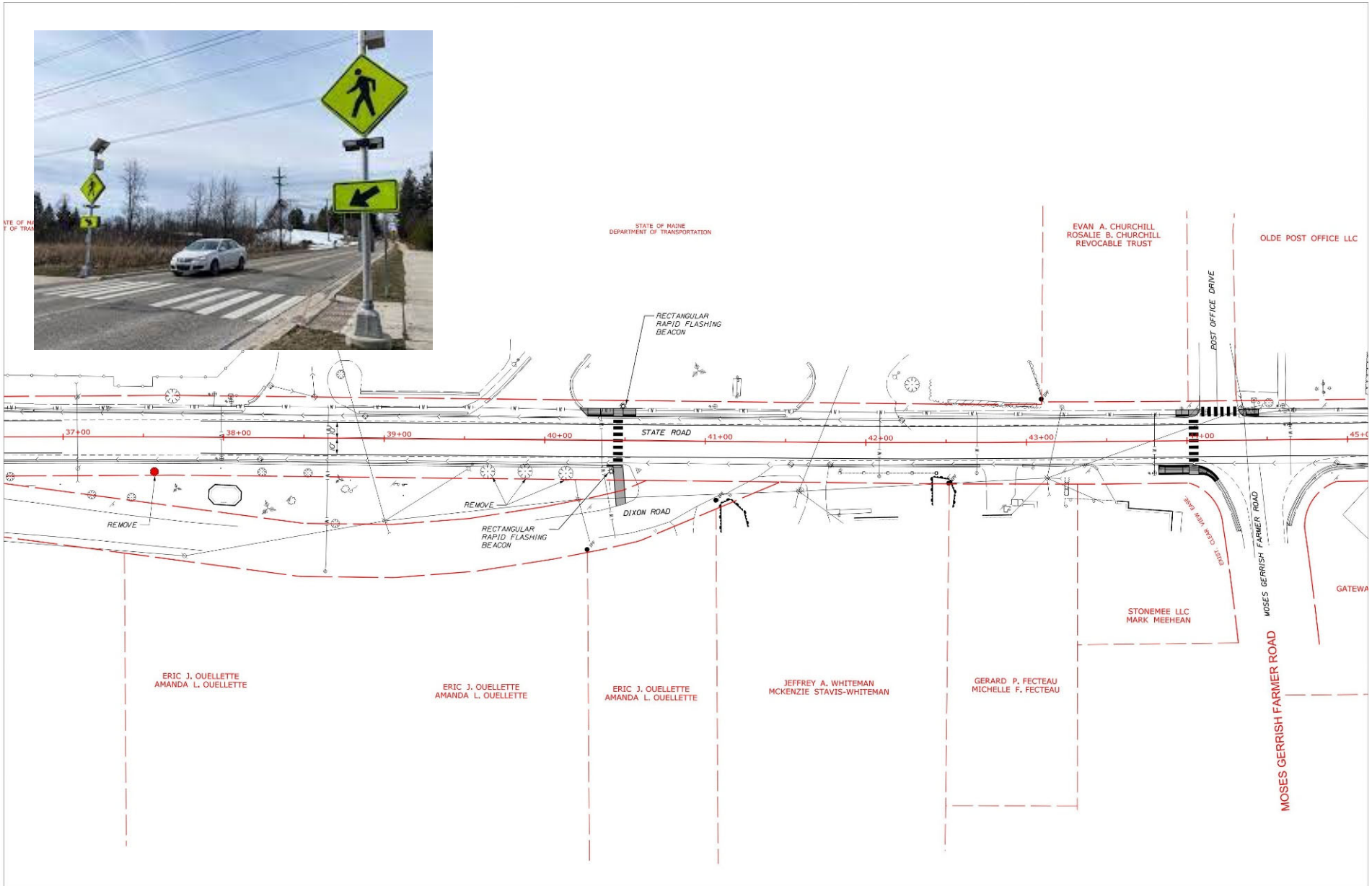
Segment 1 (State Road: Pine Ave to Grange Hall):



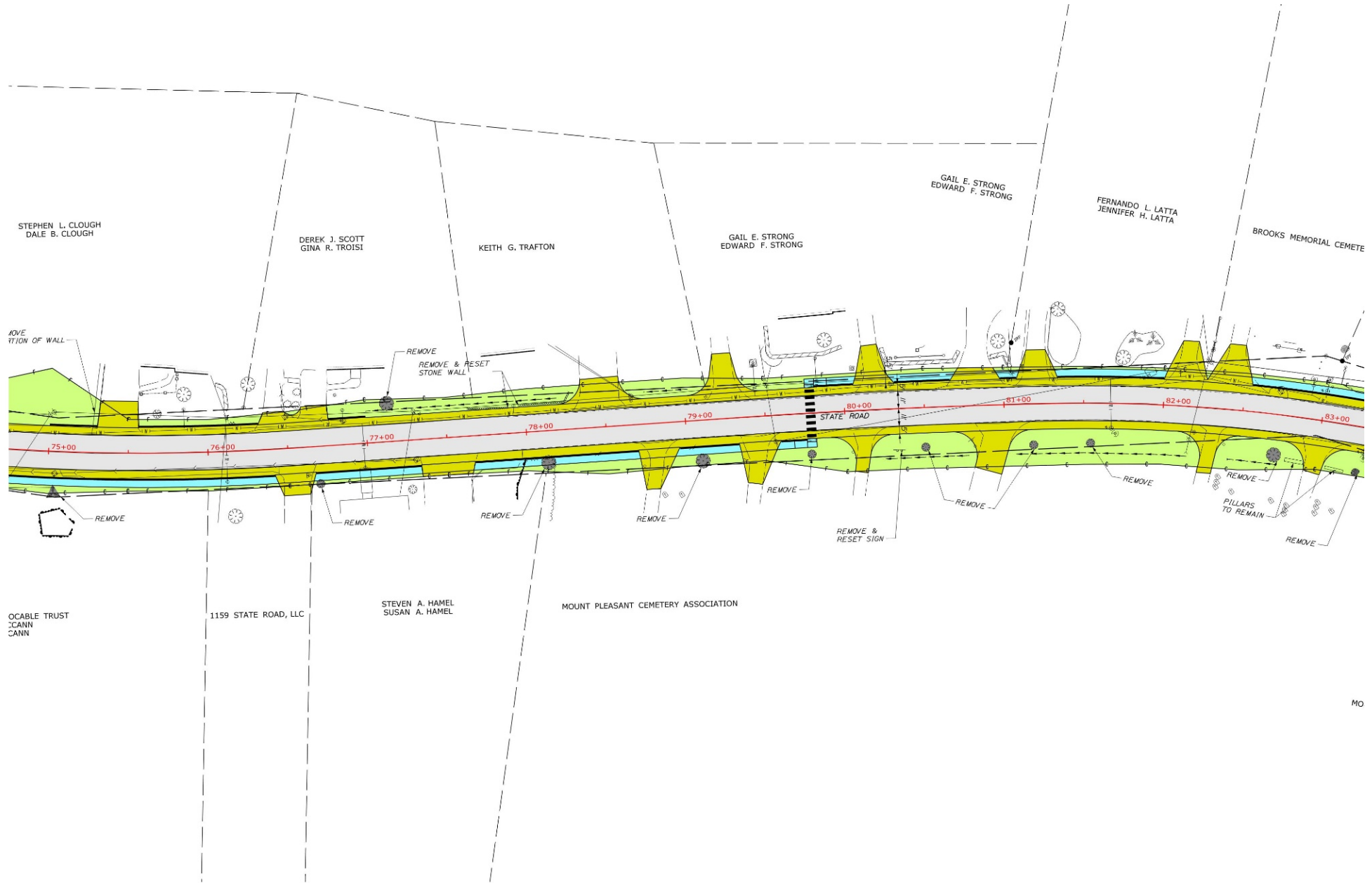
Segment 2 (State Road: Grange Hall to Old Rd):



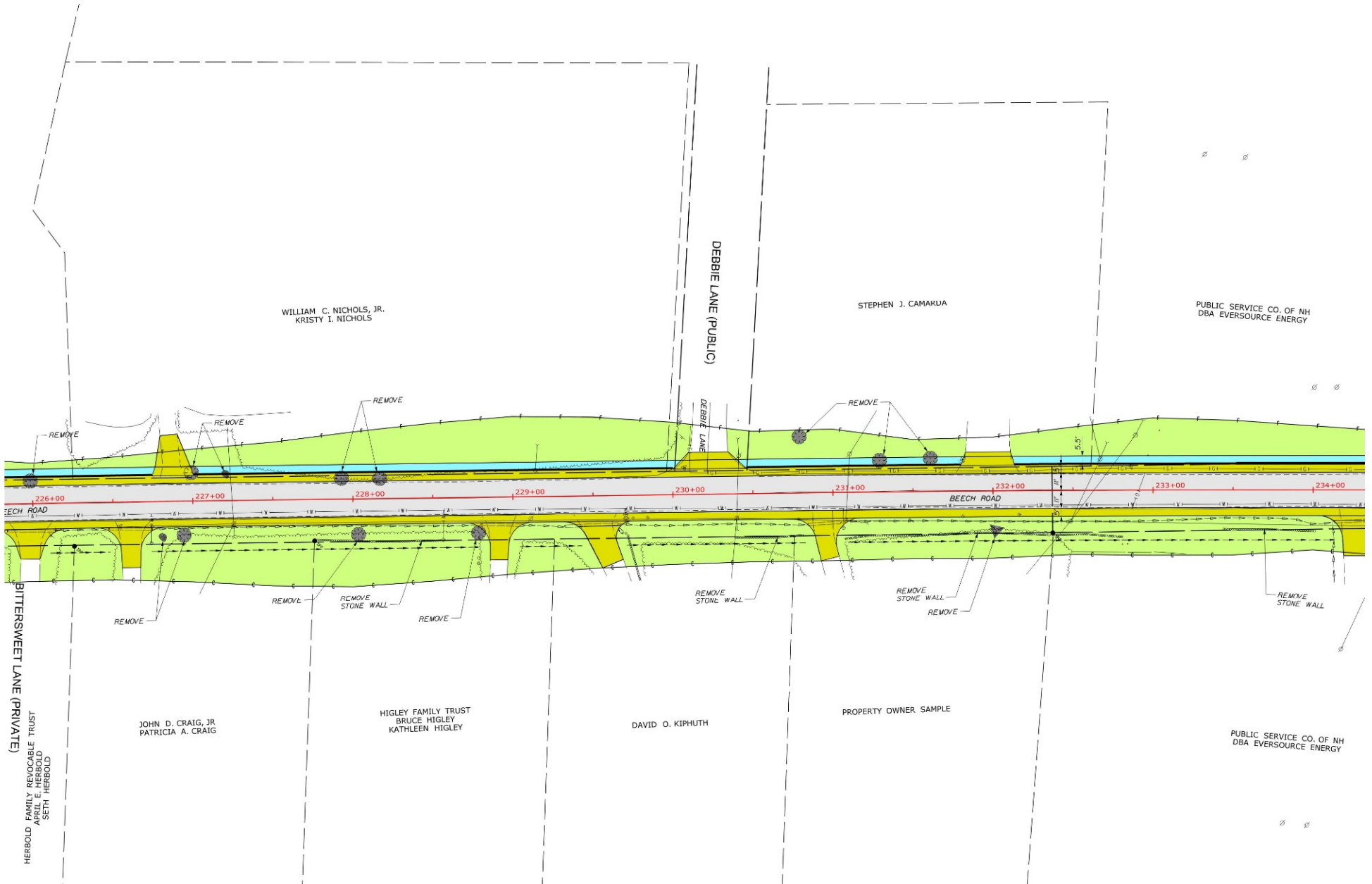
Segment 3 (State Rd: Old Rd to Moses Gerrish Farmer Rd):



Segment 4 (State Rd: Moses Gerrish Farmer Rd to Bolt Hill Rd):



Segment 5 (Beech Road: State Rd to Route 236):



5 Project Schedule

- Project Kickoff – December 2022
- Survey Complete – March 2023
- Preliminary Public meeting – June 2023
- 10% Preliminary Design – Complete by July 2023
- Final Design & Permitting – Depends on Funding
- Construction Advertisement – Depends on Funding
- Construction – Depends on Funding

6 Public Input

- Construction concerns?
- Impact concerns?
- Pedestrian & bicycle use?
- Emergency response & school busing needs?

Questions?