



Eliot Comprehensive Plan Update

Eliot Historical Society

November 7, 2022

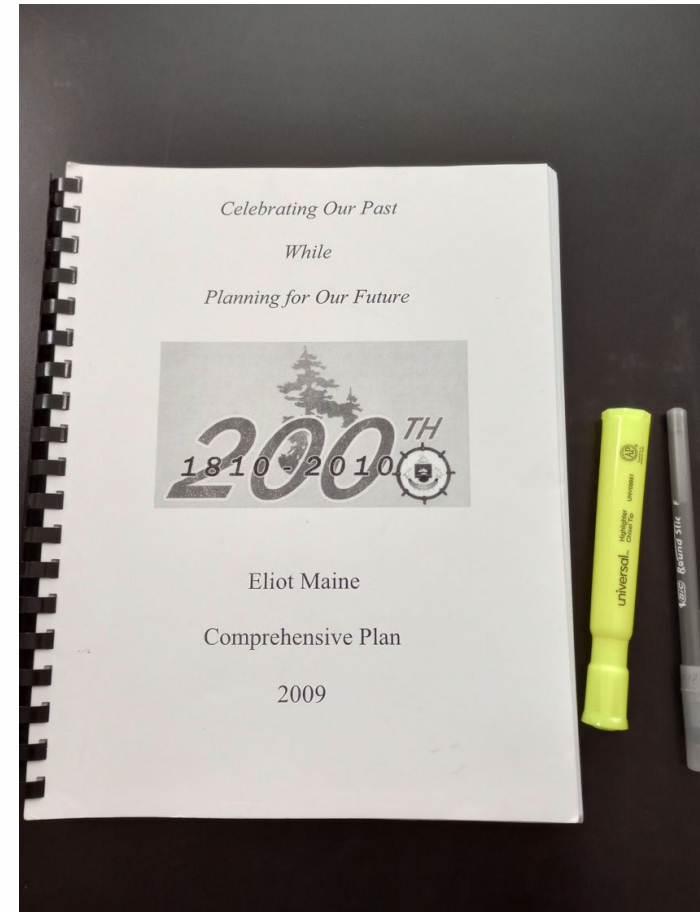
Jeff Brubaker, AICP, Town Planner

Why update the Comprehensive Plan?

Updates should occur at least every 10 years.

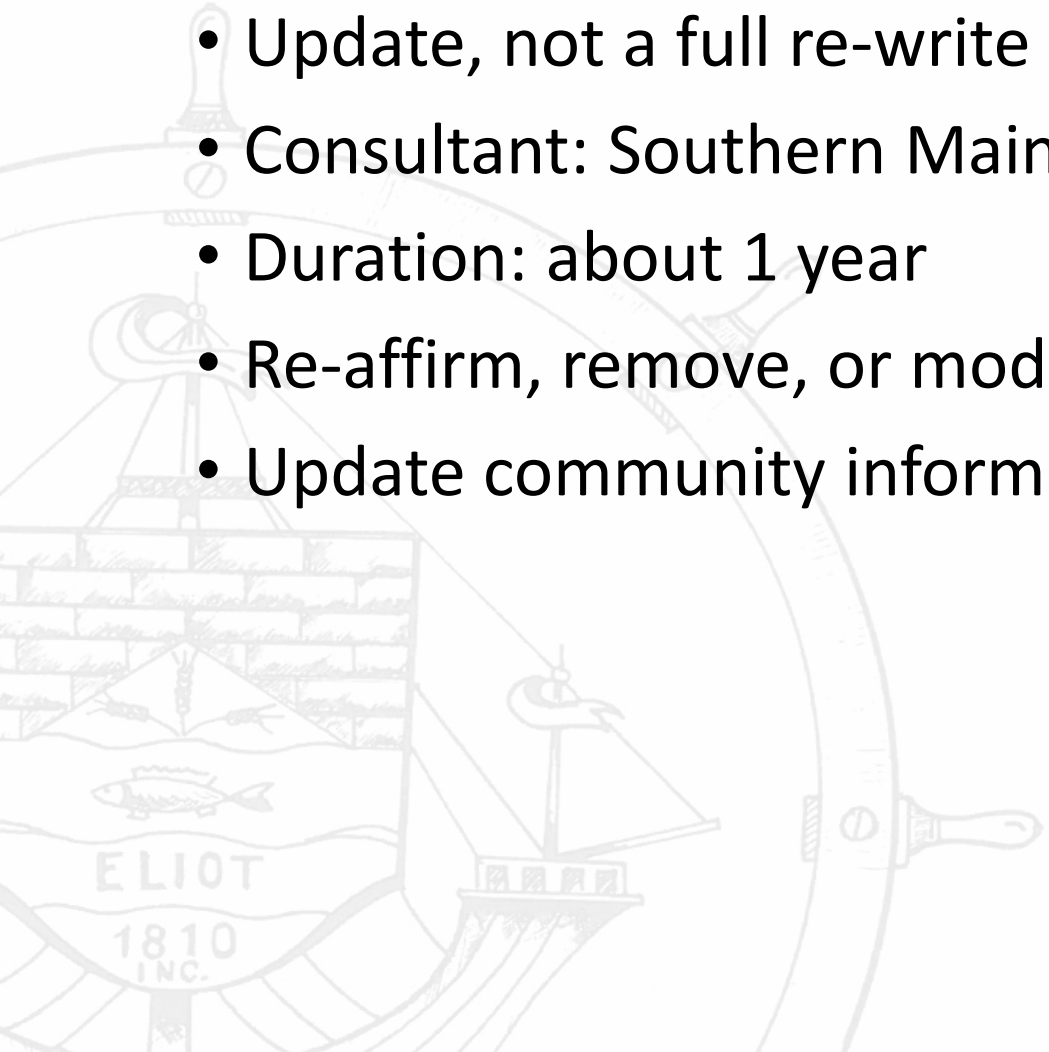
The current plan is from 2009.

When we update it, we need to be ready to implement it.



Other considerations

- Update, not a full re-write (limited budget)
- Consultant: Southern Maine Regional Planning Commission
- Duration: about 1 year
- Re-affirm, remove, or modify goals, policies, strategies
- Update community information



General schedule

- This Wednesday, 7pm: **Comprehensive Plan Committee Kickoff Meeting** in Town Hall (w/ Zoom option)
- November/December: First **Subcommittee** meetings
- November-January: **Community Survey**
- This fall/winter: **Update Community Inventory**
 - Including the Historical, Cultural, and Archaeological info
- Early 2023: First **public meeting** – Visioning
- Winter/spring: **Goals, Policies, and Strategies** update
- Spring/summer: Preparation/review of **draft document**

Map your cycling experiences

Where do you cycle most often? Which parts of your routes do you enjoy? Which parts do you dislike? Draw your answers on the map and specify in the pop-up window why you chose those locations. You can also submit photographs and drawings to illustrate your point.

[Click here for instructions!](#)

Choose one of the buttons below and start drawing on the map

My cycling route 🗺️

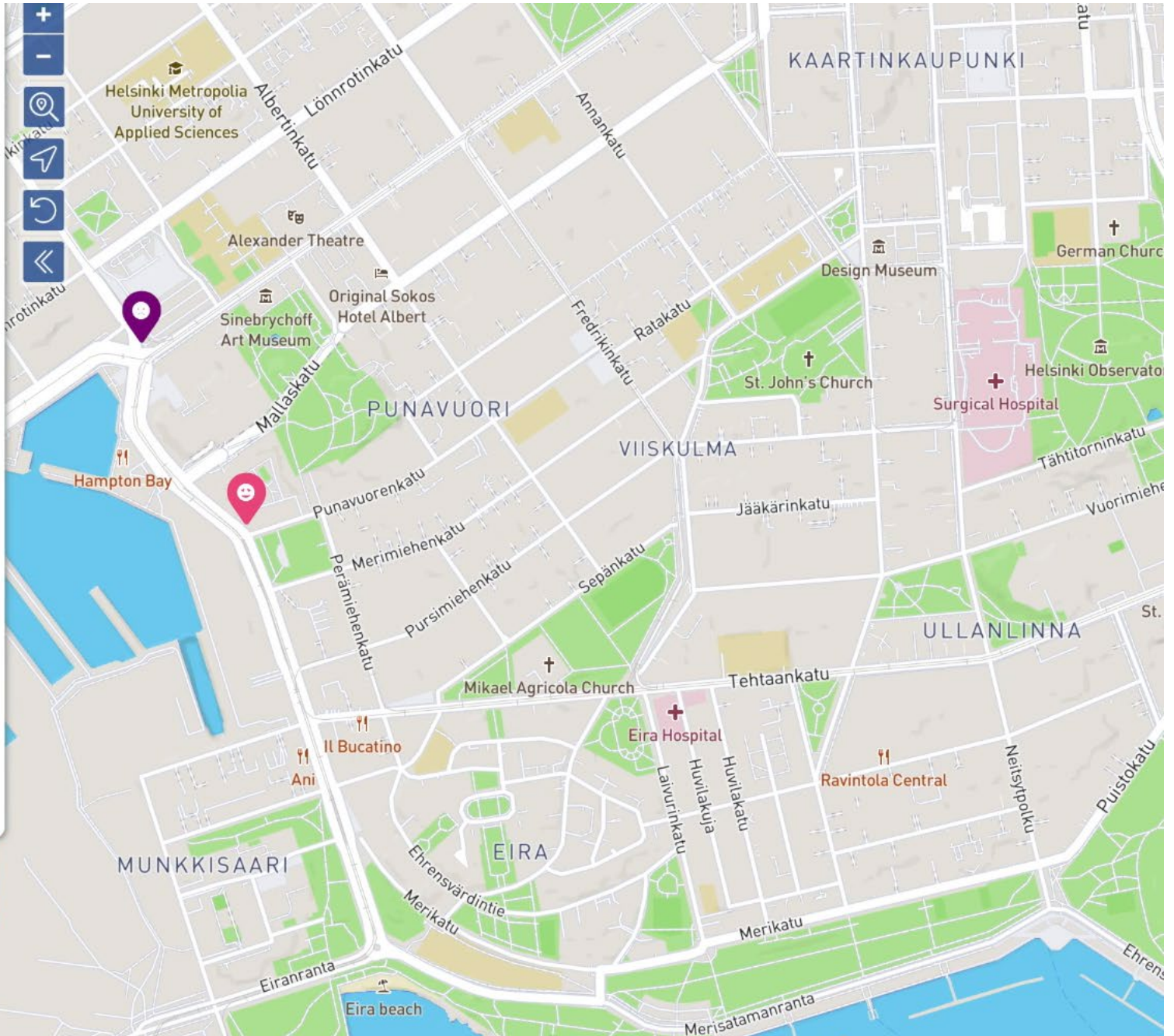
My favorite place along the route 😊

My least favorite place along the route 😞

Favorite neighborhood 🏠



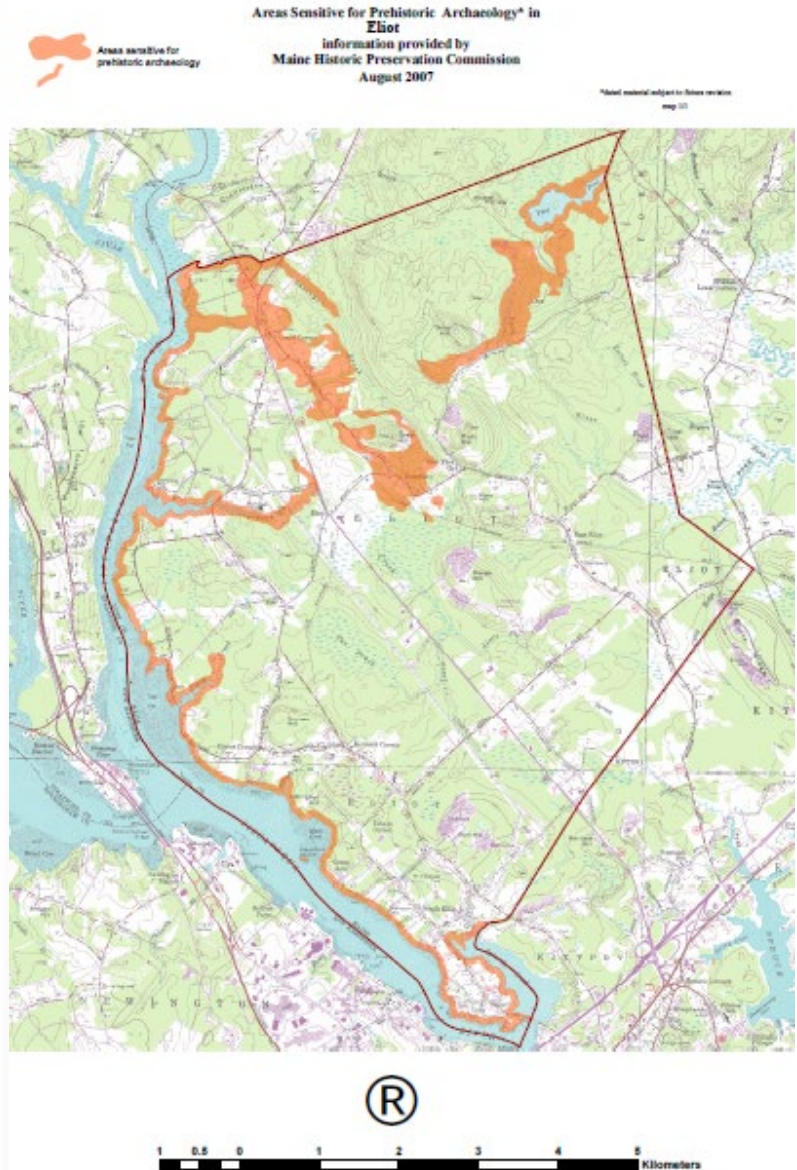
2 / 7



Inventory

2009 Comp Plan

- Historic buildings/sites
- Historic architectural style
- Cemeteries
- Town records
- Town landings
- Historic/Prehistoric Archaeological sites
- 3 National Register sites





Questions/comments